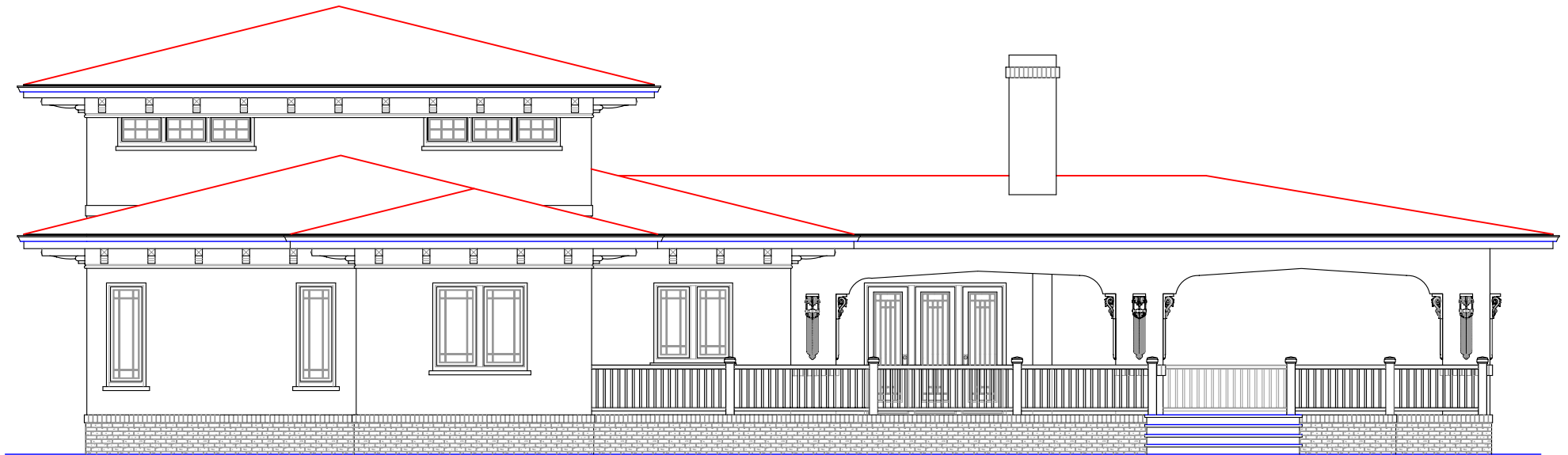


PALM GROVE, FRONT ELEVATION

© 2005 GARNETT DESIGN GROUP

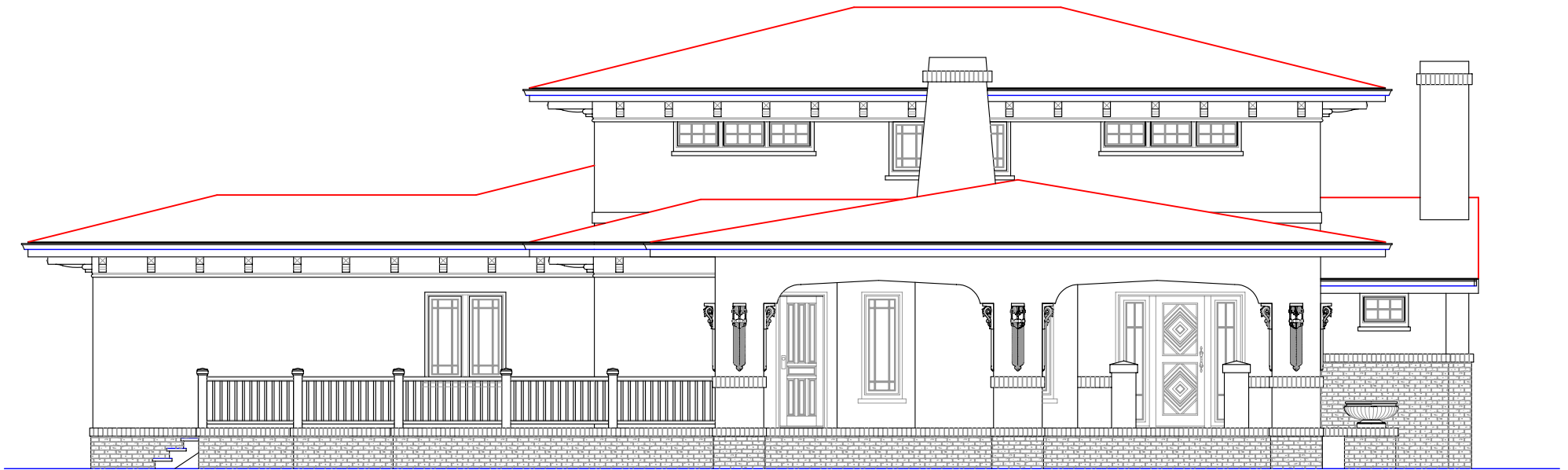
SCALE: 1/4 IN. = 10 FOOT



PALM GROVE, REAR ELEVATION

© 2005 GARNETT DESIGN GROUP

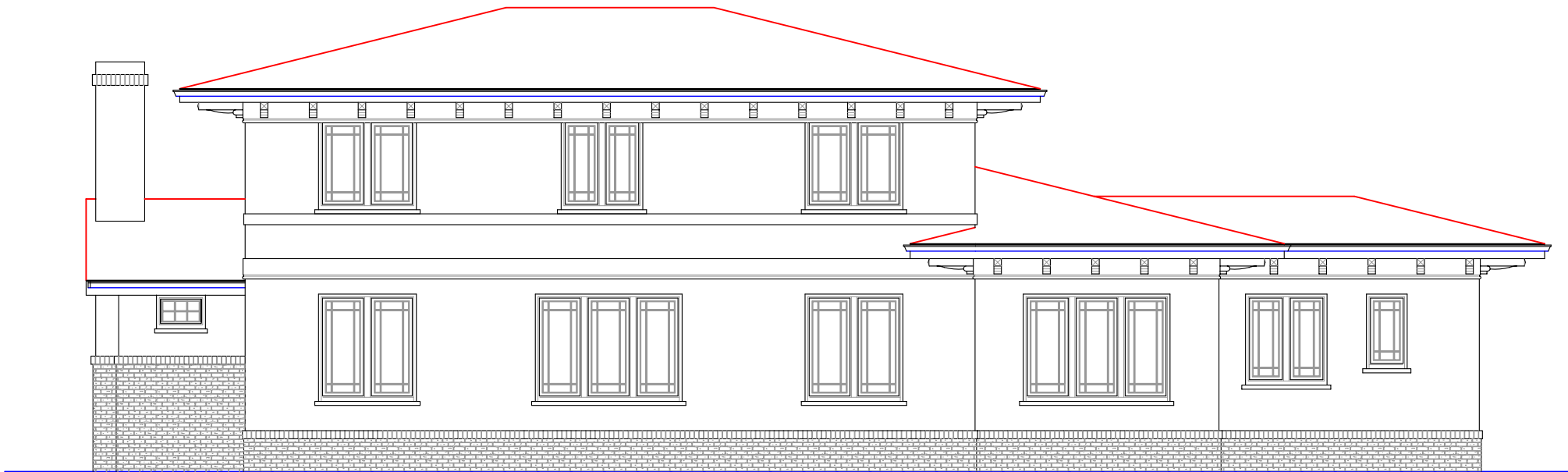
SCALE: 1/4 IN. = 10 FOOT



PALM GROVE, LEFT ELEVATION, FACING

© 2005 GARNETT DESIGN GROUP

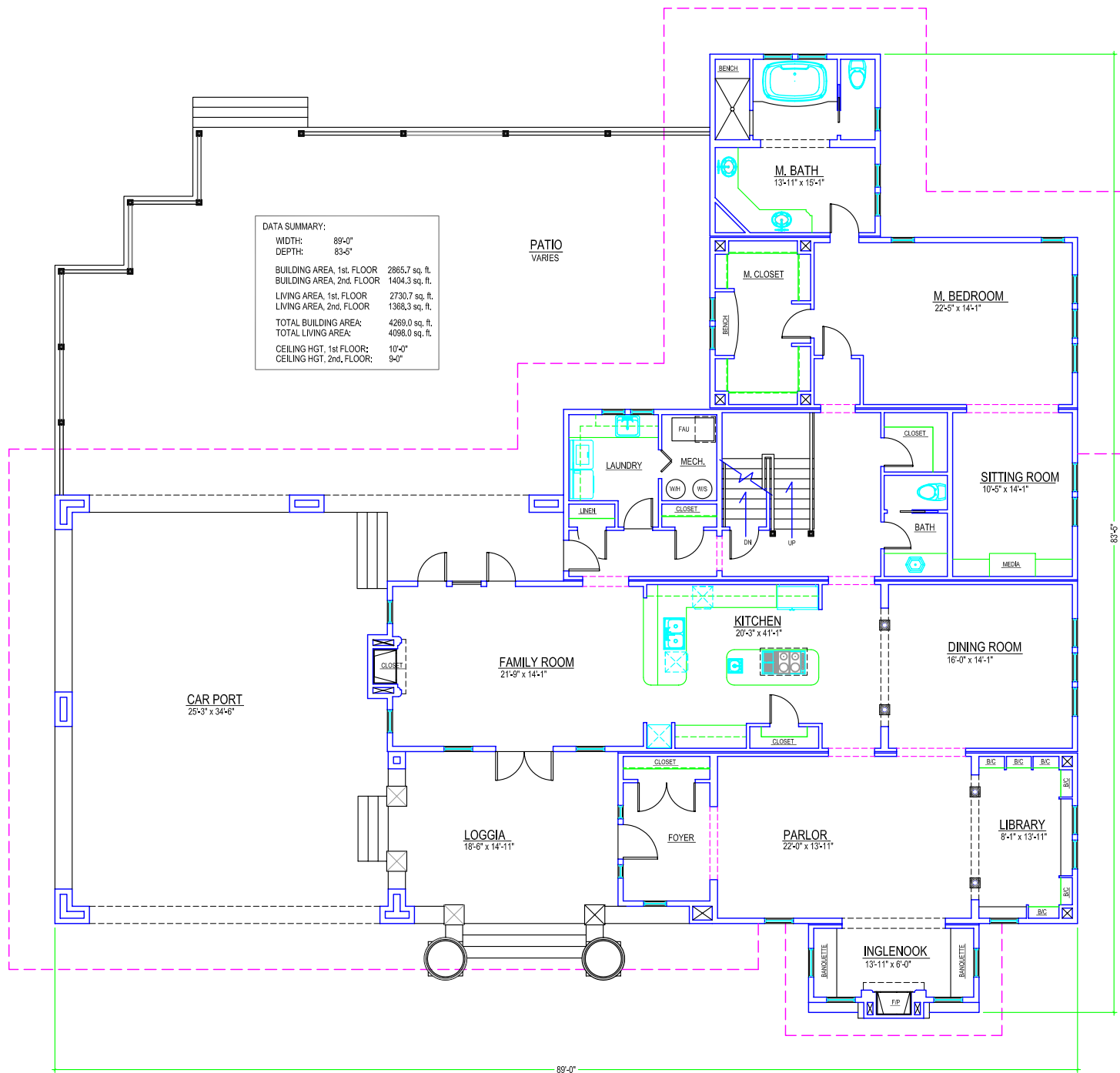
SCALE: 1/4 IN. = 1'0" FOOT



PALM GROVE, RIGHT ELEVATION, FACING

© 2005 GARNETT DESIGN GROUP

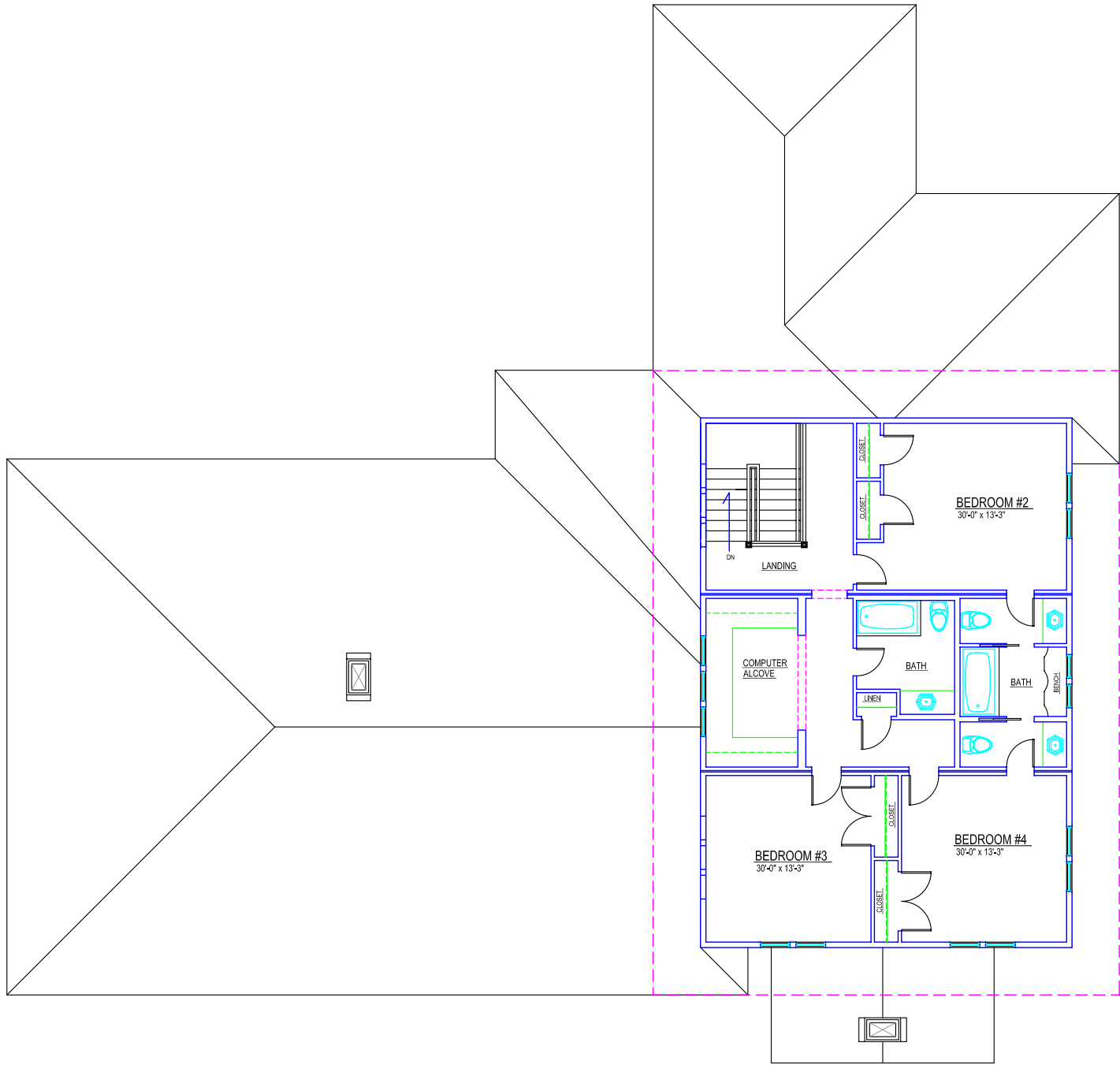
SCALE: 1/4 IN. = 10 FOOT



DATA SUMMARY:

WIDTH:	89'-0"
DEPTH:	83'-5"
BUILDING AREA, 1st. FLOOR:	2865.7 sq. ft.
BUILDING AREA, 2nd. FLOOR:	1404.3 sq. ft.
LIVING AREA, 1st. FLOOR:	2730.7 sq. ft.
LIVING AREA, 2nd. FLOOR:	1368.3 sq. ft.
TOTAL BUILDING AREA:	4269.0 sq. ft.
TOTAL LIVING AREA:	4099.0 sq. ft.
CEILING HGT, 1st FLOOR:	10'-0"
CEILING HGT, 2nd. FLOOR:	9'-0"

PALM GROVE, FRONT FLOOR PLAN



PALM GROVE, SECOND FLOOR PLAN