



THE DUDDINGTON, FRONT ELEVATION

SCALE: 1/4 IN. = 1.0 FOOT



THE DUDDINGTON, LEFT ELEVATION, FACING

SCALE: 1/4 IN. = 1.0 FOOT



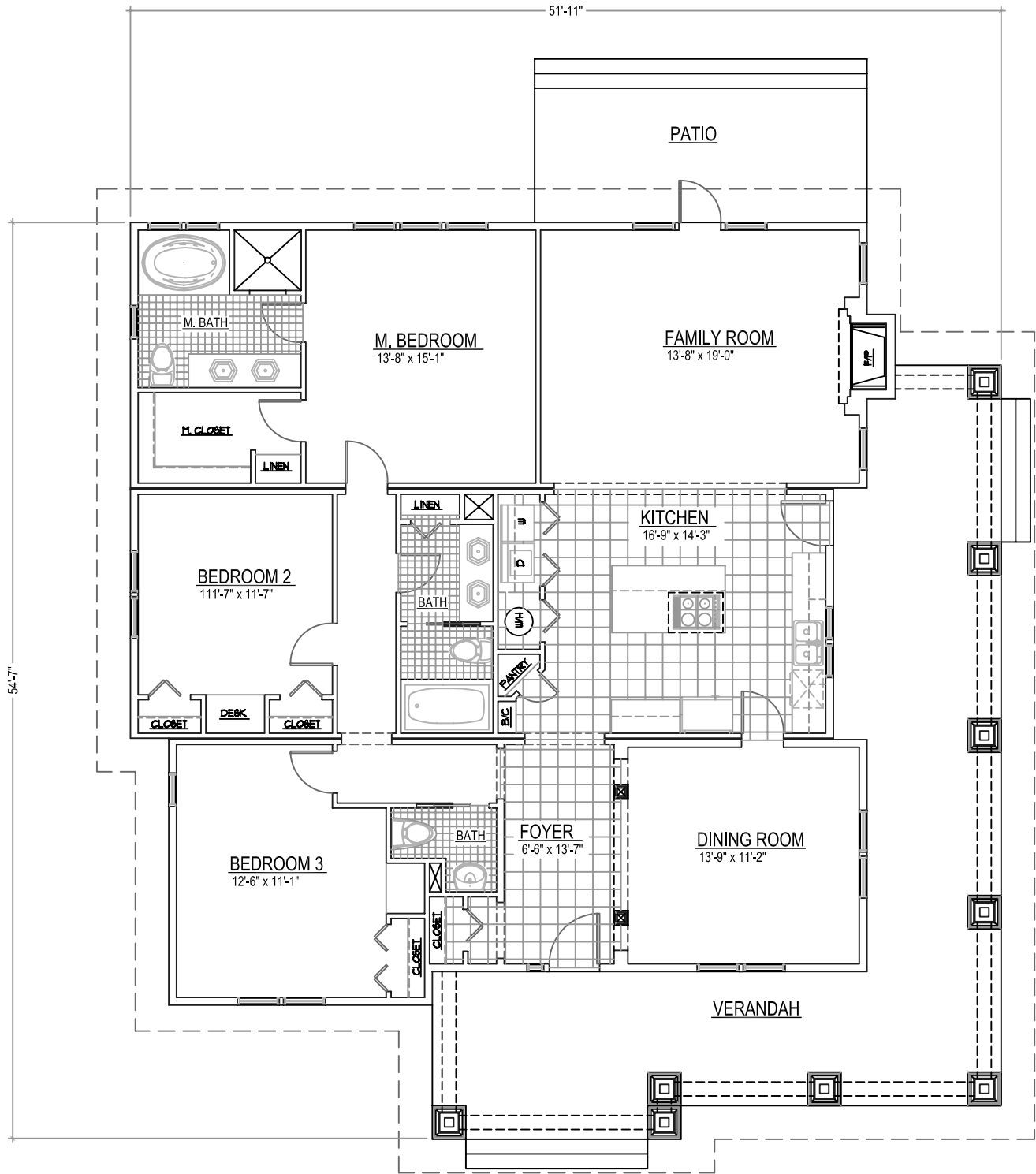
THE DUDDINGTON, REAR ELEVATION

SCALE: 1/4 IN. = 1.0 FOOT



THE DUDDINGTON, RIGHT ELEVATION, FACING

SCALE: 1/4 IN. = 1.0 FOOT



DATA SUMMARY:	
WIDTH:	72'-0"
DEPTH:	62'-3"
BUILDING AREA, 1st. FLOOR	1930.4 sq. ft.
LIVING AREA, 1st. FLOOR	1837.6 sq. ft.
CEILING HGT, 1st FLOOR:	9'-0"

THE DUDDINGTON, FIRST FLOOR PLAN

SCALE: 1/4 IN. = 10 FOOT